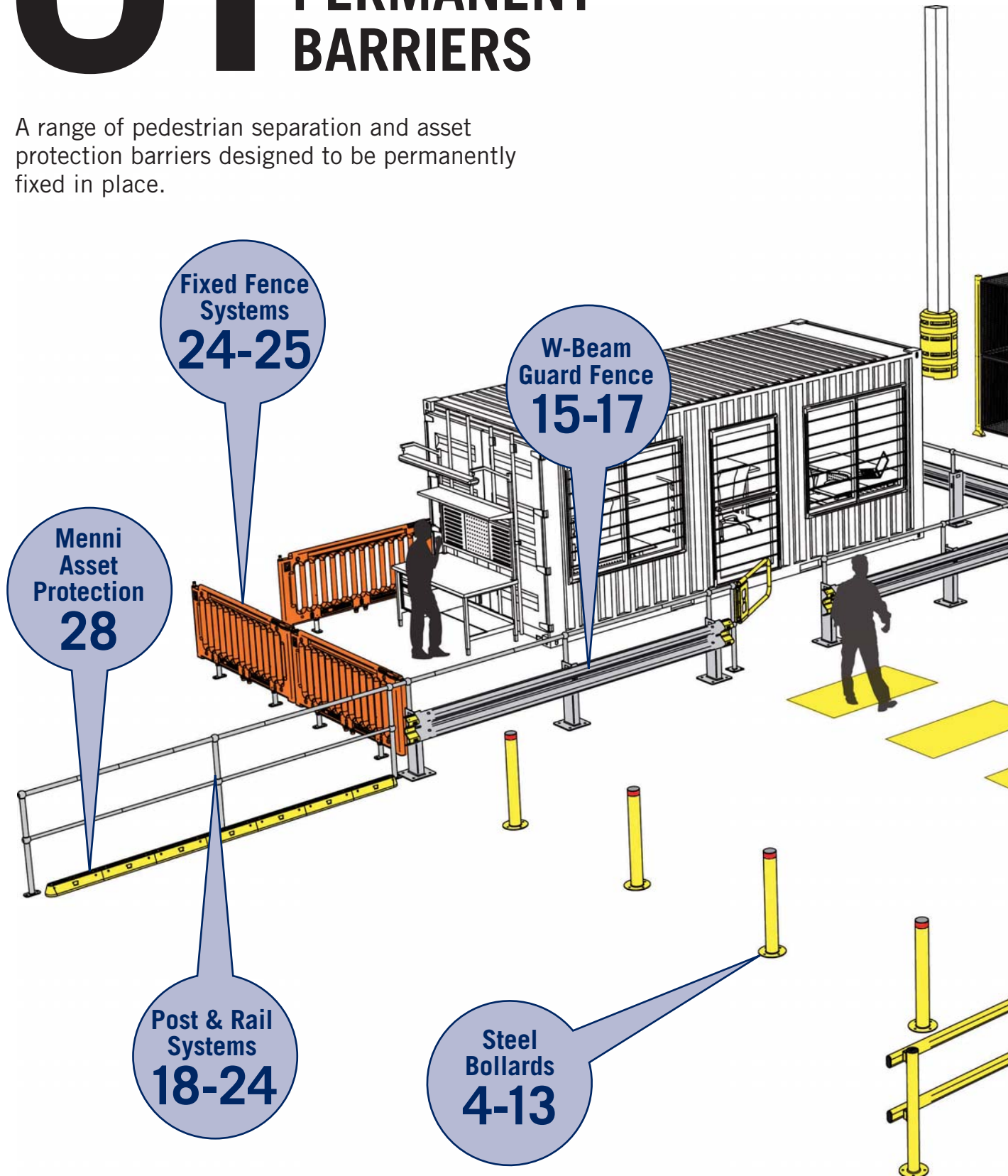


# 01

## PERMANENT BARRIERS

A range of pedestrian separation and asset protection barriers designed to be permanently fixed in place.



Machinery Guarding  
**92-95**

Column Protection  
**29**

U-Bars  
**21-22**

Racking End Protection  
**27**

Racking Leg Protection  
**26**

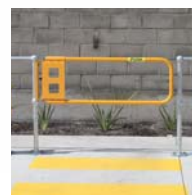
**NEW TO PERMANENT BARRIERS:**



**Builders  
Bollard Range**



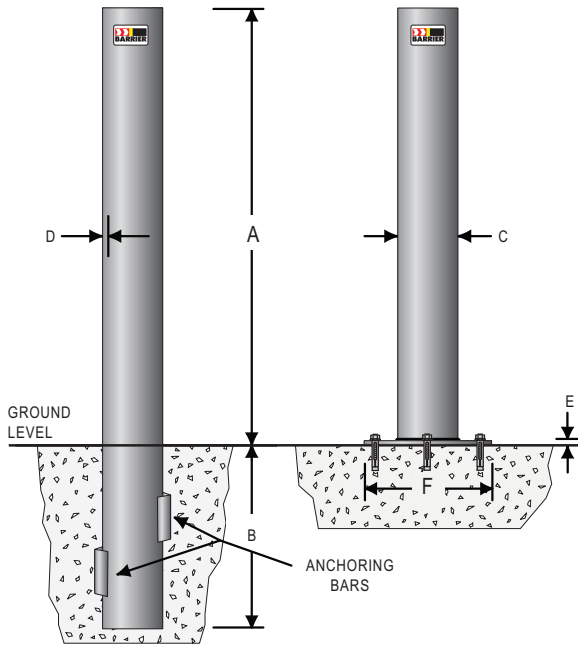
**W-Beam  
Guard Fence**



**Ball-Fence  
Range Expanded**



**Bull-dog  
Brackets**



**ALL NEW  
LOW  
PRICING**

## ROUND BOLLARDS Stainless Steel

**316  
Marine grade  
polished  
stainless  
steel**

Our round stainless steel bollards are offered in three designs: below ground for installation into a concrete footing, core drilled for installation into a core drilled hole using epoxy adhesive, or surface mount for bolted installations.

Manufactured from marine grade 316 stainless steel these bollards are all finished with No. 4 mechanical finish. 316 grade is recommended for installation near coastal areas to minimise the risk of tea staining and to ensure the bollards maintain a high quality appearance over many years.

Our stainless steel bollards have a machined flat cap. This helps present a high quality appearance required for architectural environments. For the ultimate high quality presentation, polished stainless steel skirts are available as an option to cover the base plates and fixings.

### Features:

- 316 grade polished stainless steel.
- Machined flat cap.
- Available in surface mount, new concrete or core drilled models.
- 90 or 140mm diameter.
- Optional cover skirts available.



Ideal for high-end architectural applications.



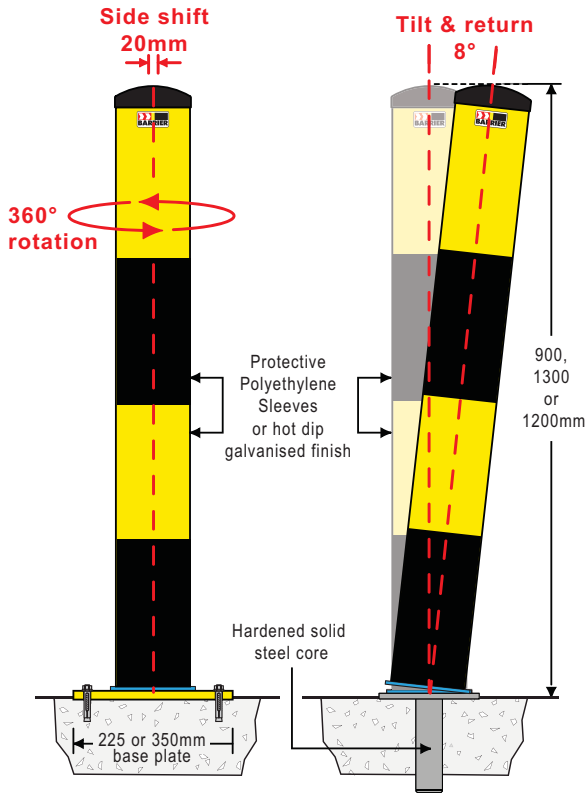
Machined flat cap.



Optional base cover.

### BELOW GROUND (BG), SURFACE MOUNT (SM) & CORE DRILLED (CD)

PART No.	A (mm)	B (mm)	C (mm)	D (mm)	E (mm)	F (mm)	Stainless Grade	Weight (kg)
C90BG-SS	900	300	90	3.05	–	–	316	8kgs
C90CD-SS	900	200	90	3.05	–	–	316	7.4kgs
C90SM-SS	900	–	90	3.05	6	225	316	7.4kgs
COV90-SS	Optional 90mm base cover – stainless steel				–	–	–	0.3kgs
C140BG-SS	1200	500	140	3.4	–	–	316	25kgs
C140CD-SS	1200	200	140	3.4	–	–	316	22kgs
C140SM-SS	1200	–	140	3.4	10	300	316	19kgs
COV140-SS	Optional 140mm base cover – stainless steel				–	–	–	0.5kg



SAB140 models shown.



SABs protect against damage by simply absorbing this kind of impact.

**Shock Absorbing Bollard (SAB140-CD shown)**

**1**  
DEFLECTION IMPACT  
Ability to rotate through 360°

**2**  
TYPICAL UPPER IMPACT  
Maximum angle of deflection 8°

**3**  
TYPICAL LOWER IMPACT  
Maximum sideways deflection 20mm at ground level

**The vast majority of damage caused to assets is by vehicles manoeuvring at low speed. SABs have the ability to completely eliminate this damage.**

## SHOCK ABSORBING BOLLARDS

### Features:

- Minimises damage by absorbing repeated low speed impacts.
- Can move in three directions simultaneously to absorb impact and return to original position.
- Surface mount or core drilled models available.
- Available in three sizes for different applications.
- Reduces damage to floors caused when rigid bollards are hit.
- Ideal for car parks, warehouses, supermarkets, airports etc.

### 90mm Medium Duty

Retail/Warehouse applications where protection is required from trolleys or hand trucks. Supermarket freezers, warehouse outlets etc.

<b>Material:</b>	Marine grade 316 stainless steel.
<b>Casing size:</b>	90mm dia. x 900mm high x 3.05mm wall.
<b>Shaft size:</b>	25mm solid 316 stainless steel.
<b>Weight:</b>	12kgs (approx.)
<b>Finish:</b>	Satin finish (No.4).
<b>Installation:</b>	Surface mount or Core drilled

### 140mm Heavy Duty

Industrial/Commercial applications, asset protection from slow moving heavy vehicles. Factories, warehouses, car parks etc.

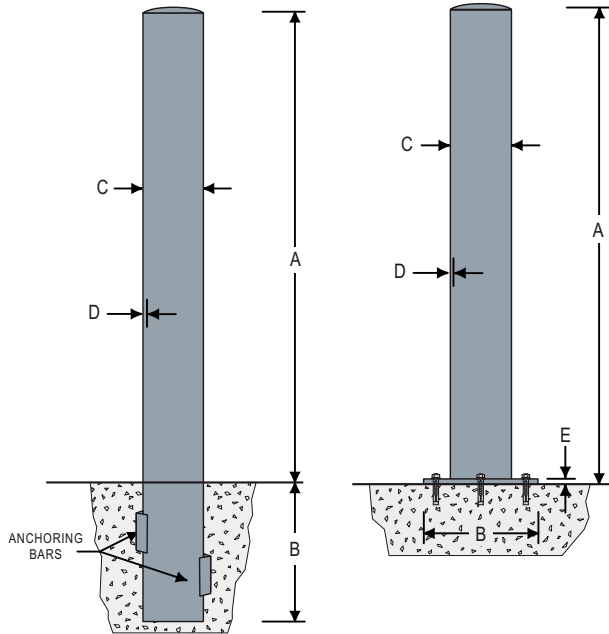
<b>Material:</b>	Hot dipped galvanised (HDG).
<b>Casing size:</b>	140mm dia. x 1200mm high x 5mm wall.
<b>Shaft size:</b>	50mm solid steel Grade K1045.
<b>Weight:</b>	33kgs (approx.)
<b>Finish:</b>	HDG with polyethylene sleeves.
<b>Installation:</b>	Surface mount or Core drilled.

### 220mm Extra Heavy Duty

Heavy industrial applications, asset protection from heavy/large slow moving vehicles. Airports (airside), factories etc.

<b>Material:</b>	Hot dipped galvanised.
<b>Casing size:</b>	220mm dia. x 1300mm high x 6.4mm wall.
<b>Shaft size:</b>	100mm solid steel Grade K1045.
<b>Weight:</b>	120kgs (approx.)
<b>Finish:</b>	Hot dipped galvanised.
<b>Installation:</b>	Core drilled only.

PART No.	DESCRIPTION
SAB90SS-CD	Shock absorbing bollard – Core drilled 90mm dia. 316 S/S
SAB90SS-SM	Shock absorbing bollard – Surface mount 90mm dia. 316 S/S
SAB140-CD	Shock absorbing bollard – Core drilled 140mm dia. HDG/PE
SAB140-SM	Shock absorbing bollard – Surface mount 140mm dia. HDG/PE
SAB220-CD	Shock absorbing bollard – Core drilled 220mm dia. HDG



Galvanised model shown above.

## ROUND BOLLARDS Heavy Duty

### Features:

- Cast aluminium caps provide high quality finish.
- Standard Class 1 reflective band.
- Fully welded heavy steel base plated models.
- Welded starter bars for fixing into concrete footing.
- **All models hot dipped galvanised as standard.**
- Available in galvanised or powder coated models.
- Optional polyethylene protective sleeves, page 9.



Cast aluminium caps.



Surface mount flange.



Welded anchoring bars.



Optional chain rings.

## SURFACE MOUNT Heavy Duty Round Bollards

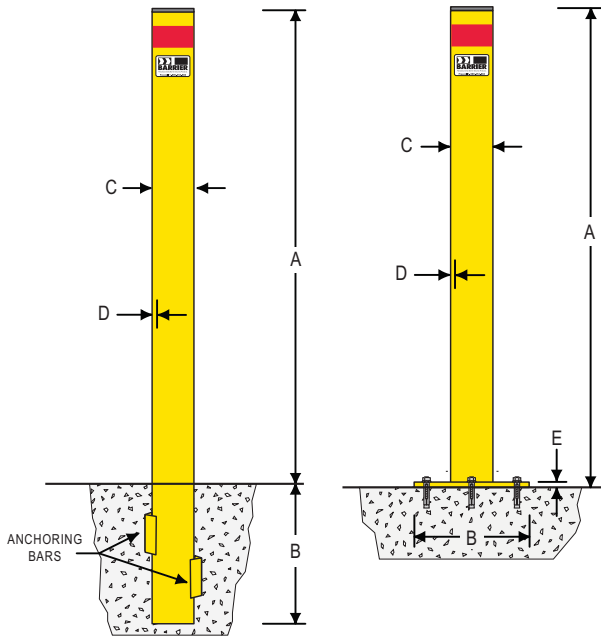
PART No.	A (mm)	B (mm)	C (mm)	D (mm)	E (mm)	Weight (kg)	No. of Fixings	Size of Fixing (sleeve anchor)	Cap	Surface Finishes	
										G	P
C90SM	900	225	90	5	6	9	4	12 x 60mm	Aluminium Fixed	✓	✓
C90SM-G	900	225	90	5	6	9	4	12 x 60mm	Aluminium Fixed	✓	
C140SM	1200	300	140	5	10	23	4	16 x 65mm	Aluminium Fixed	✓	✓
C140SM-G	1200	300	140	5	10	23	4	16 x 65mm	Aluminium Fixed	✓	
C165SM	1300	350	165	5	12	34	4	20 x 75mm	Aluminium Loose	✓	✓
C165SM-G	1300	350	165	5	12	34	4	20 x 75mm	Aluminium Loose	✓	
C220SM	1300	400	220	6.4	12	45	4	20 x 105mm	Aluminium Loose	✓	✓
C220SM-G	1300	400	220	6.4	12	45	4	20 x 105mm	Aluminium Loose	✓	

Surface Finish: G – Galvanised. P – Powder coated Safety Yellow unless specified a custom colour.

## BELOW GROUND Heavy Duty Round Bollards

PART No.	A (mm)	B (mm)	C (mm)	D (mm)	Weight (kg)	Anchoring Bars	Size of Anchoring Bars	Cap	Surface Finishes	
									G	P
C90BG	900	380	90	5	12	2	30 x 30 x 50mm angle	Aluminium Fixed	✓	✓
C90BG-G	900	380	90	5	12	2	30 x 30 x 50mm angle	Aluminium Fixed	✓	
C140BG	1200	500	140	5	29	2	30 x 30 x 100mm angle	Aluminium Fixed	✓	✓
C140BG-G	1200	500	140	5	29	2	30 x 30 x 100mm angle	Aluminium Fixed	✓	
C165BG	1300	650	165	5	40	2	30 x 30 x 100mm angle	Aluminium Loose	✓	✓
C165BG-G	1300	650	165	5	40	2	30 x 30 x 100mm angle	Aluminium Loose	✓	
C220BG	1300	650	220	6.4	53	2	30 x 30 x 100mm angle	Aluminium Loose	✓	✓
C220BG-G	1300	650	220	6.4	53	2	30 x 30 x 100mm angle	Aluminium Loose	✓	

Surface Finish: G – Galvanised. P – Powder coated Safety Yellow unless specified a custom colour.



Powder coated model shown above.

## SQUARE BOLLARDS Heavy Duty

### Features:

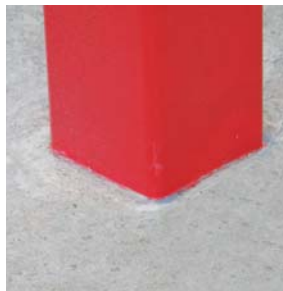
- Fixed, square surface mount and below ground bollards are designed for traffic control situations and asset protection.
- Surface mount bollards have fully welded base plates and are suitable for installation onto any concrete surface.
- Below ground bollards have fully welded starter bars for installation into new concrete footings. Suitable for installation in asphalt or any soft surface where a concrete footing will be necessary.
- Manufactured from heavy wall mild steel and **hot dipped galvanised as standard** with the option of powder coating as a final finish. (Safety Yellow as standard, other colours are available on request).
- Available in two sizes.
- Standard Class 1 reflective band.
- All our bollards are supplied complete with necessary fixings.
- Optional chain rings are available for connecting chains or ropes to our bollards.



Welded flat caps.



Surface mount model.



Below ground model.



Optional chain rings.

### SURFACE MOUNT Square Bollards

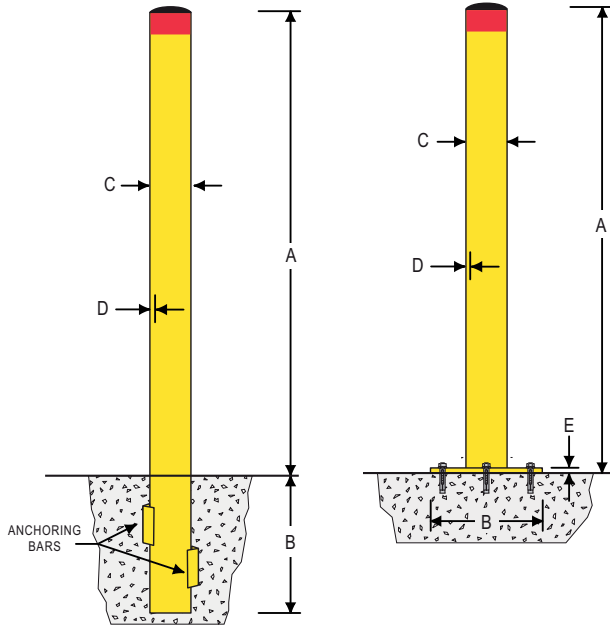
PART No.	A (mm)	B (mm)	C (mm)	D (mm)	E (mm)	Weight (kg)	No. of Fixings	Size of Fixing (sleeve anchor)	Cap	Surface Finishes		
										G	P	
CS90SM	900	200	90	5	6	12.75	4	12 x 60mm	Welded Flat	✓	✓	
CS90SM-G	900	200	90	5	6	12.75	4	12 x 60mm	Welded Flat	✓	–	
CS150SM	1200	300	150	5	10	32	4	20 x 75mm	Welded Flat	✓	✓	
CS150SM-G	1200	300	150	5	10	32	4	20 x 75mm	Welded Flat	✓	–	
FIX1117	Metric shoulder gold eye bolt – can be attached to any of the above when requested.								–	–	–	–

### BELOW GROUND Square Bollards

PART No.	A (mm)	B (mm)	C (mm)	D (mm)	Weight (kg)	Anchoring Bars	Size of Anchoring Bars	Cap	Surface Finishes		
									G	P	
CS90BG	900	400	90	5	16.5	2	30 x 30 x 50mm angle	Welded Flat	✓	✓	
CS90BG-G	900	400	90	5	16.5	2	30 x 30 x 50mm angle	Welded Flat	✓	–	
CS150BG	1200	500	150	5	38	2	30 x 30 x 100mm angle	Welded Flat	✓	✓	
CS150BG-G	1200	500	150	5	38	2	30 x 30 x 100mm angle	Welded Flat	✓	–	
FIX1117	Metric shoulder gold eye bolt – can be attached to any of the above when requested.								–	–	–

Surface Finish: G – Galvanised. P – Powder coated Safety Yellow unless specified a custom colour.

Phone us or visit our website for more information!



## ROUND BOLLARDS Economy

### Features:

- Economical alternative when heavy duty models are not necessary.
- Removable plastic moulded caps.
- Standard Class 1 reflective band.
- Fully welded heavy steel base plated models.
- Welded starter bars for fixing into concrete footing.
- Surface mount models supplied with fixings.
- **All models hot dipped galvanised as standard.**
- Available in galvanised or powder coated models.



Removable plastic caps.



Surface mount flange.



Welded anchoring bars.



Optional chain rings.

## SURFACE MOUNT Economy Round Bollards

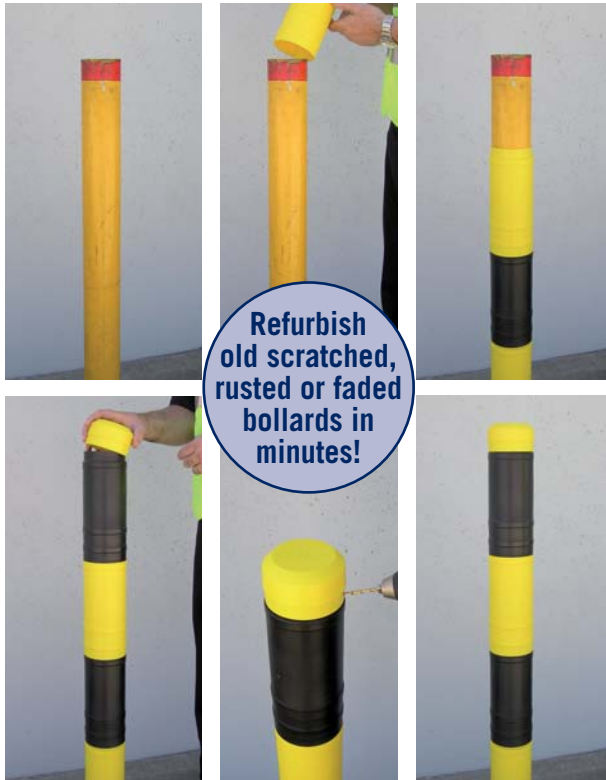
PART No.	A (mm)	B (mm)	C (mm)	D (mm)	E (mm)	Weight (kg)	No. of Fixings	Size of Fixing (sleeve anchor)	Cap	Surface Finishes	
										G	P
C63SME	900	150	63	1.6	6	3.5	3	M10	Plastic	✓	✓
C63SME-G	900	150	63	1.6	6	3.5	3	M10	Plastic	✓	
C90SME	900	200	90	3.2	6	8.2	4	M12	Plastic	✓	✓
C90SME-G	900	200	90	3.2	6	8.2	4	M12	Plastic	✓	
C114SME	1000	250	114	3	6	11.1	4	M12	Plastic	✓	✓
C114SME-G	1000	250	114	3	6	11.1	4	M12	Plastic	✓	
C140SME	1200	250	140	3.5	8	18.4	4	M16	Plastic	✓	✓
C140SME-G	1200	250	140	3.5	8	18.4	4	M16	Plastic	✓	

Surface Finish: G – Galvanised. P – Powder coated Safety Yellow unless specified a custom colour.

## BELOW GROUND Economy Round Bollards

PART No.	A (mm)	B (mm)	C (mm)	D (mm)	Weight (kg)	Anchoring Bars	Size of Anchoring Bars	Cap	Surface Finishes	
									G	P
C63BGE	900	300	63	1.6	3.4	2	30 x 30 x 50mm angle	Plastic	✓	✓
C63BGE-G	900	300	63	1.6	3.4	2	30 x 30 x 50mm angle	Plastic	✓	
C90BGE	900	300	90	3.2	8.8	2	30 x 30 x 50mm angle	Plastic	✓	✓
C90BGE-G	900	300	90	3.2	8.8	2	30 x 30 x 50mm angle	Plastic	✓	
C114BGE	1000	400	114	3	12.8	2	30 x 30 x 50mm angle	Plastic	✓	✓
C114BGE-G	1000	400	114	3	12.8	2	30 x 30 x 50mm angle	Plastic	✓	
C140BGE	1200	300	140	3.5	18.7	2	30 x 30 x 100mm angle	Plastic	✓	✓
C140BGE-G	1200	300	140	3.5	18.7	2	30 x 30 x 100mm angle	Plastic	✓	

Surface Finish: G – Galvanised. P – Powder coated Safety Yellow unless specified a custom colour.



Refurbish old scratched, rusted or faded bollards in minutes!

## BOLLARD PROTECTION SLEEVES

### Features:

- Quick, simple and economical.
- Super tough polyethylene sleeves and caps fit any standard 140 or 90mm diameter bollards.
- The 140mm diameter sleeve module is 300mm long and 225mm for the 90mm diameter model.
- Modules can be grouped in single or alternating colours.
- Ideal for shopping centres, car parks, schools and warehouses.

PART No.	DESCRIPTION
PBS90-Y	90mm sleeve module – Yellow
PBSC90-Y	90mm sleeve cap – Yellow
PBS90-B	90mm sleeve module – Black
PBSC90-B	90mm sleeve cap – Black
PBS90-R	90mm sleeve module – Red
PBSC90-R	90mm sleeve cap – Red
PBS90-W	90mm sleeve module – White
PBSC90-W	90mm sleeve cap – White
PBS140-Y	140mm sleeve module – Yellow
PBSC140-Y	140mm sleeve cap – Yellow
PBS140-B	140mm sleeve module – Black
PBSC140-B	140mm sleeve cap – Black
PBS140-R	140mm sleeve module – Red
PBSC140-R	140mm sleeve cap – Red
PBS140-W	140mm sleeve module – White
PBSC140-W	140mm sleeve cap – White



Parking Space Protectors 75



## FOLD-DOWN BOLLARD

### Features:

- Simple padlock design.
- Stands 800mm tall when locked up.
- Only 80mm high in the lay flat position.
- Available in surface mount or used with concrete footing kit.
- Padlock models include fixings and padlock.
- Key lockable model includes fixings and two keys.
- All models hot dipped galvanised.
- Broad 150mm face includes reflective sign face.

**Material:** Mild steel.

**Finish:** Safety Yellow powder coat and galvanised or galvanised only.

**Height:** Down 80mm, Up 800mm.

**Weight:** Operating 5kgs, Shipping 12kgs.

**Fixing:** Surface mount supplied with 4 off 12 x 60mm. Masonry anchors.

**Locking:** 40mm padlock (supplied).

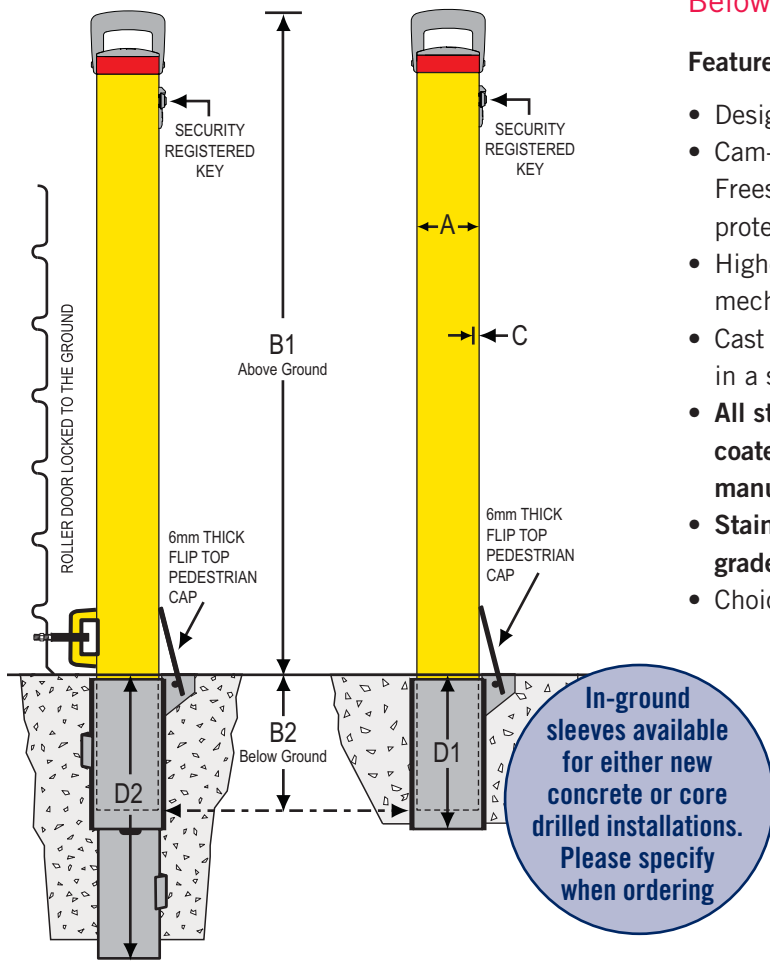
**Sign:** Class 2 reflective sheeting 120 x 500mm (included).

PART No.	DESCRIPTION
FD150	Powder coated fold-down bollard – Padlock
FD150-G	Galvanised fold-down bollard – Padlock
FD150K	Galvanised fold-down bollard – Key lockable
FDS1	Reflective sign face with Red & Yellow diagonal stripes
BGK4	In-ground kit for FD150



**ROLLER DOOR**

**FREE STANDING**



**CAM-LOK REMOVABLE BOLLARDS**  
Below Ground

**Features:**

- Designed to help combat 'Ram-raids'.
- Cam-Lok removable bollards come in two styles. Freestanding and roller door models for the protection of factory roller shutter doors.
- Highest quality 'Bi-lock' removable core lock mechanisms with security registered keying.
- Cast aluminium caps and handles finished in a silver grey metallic powder coat.
- **All steel bollards (including those with powder coated finishes) are hot dipped galvanised during manufacture.**
- **Stainless steel models are made from marine grade 316 stainless steel with a polished finish.**
- Choice of in-ground sleeves.



Cast aluminium caps with handles.



Top quality 'Bi-lock' security locks.

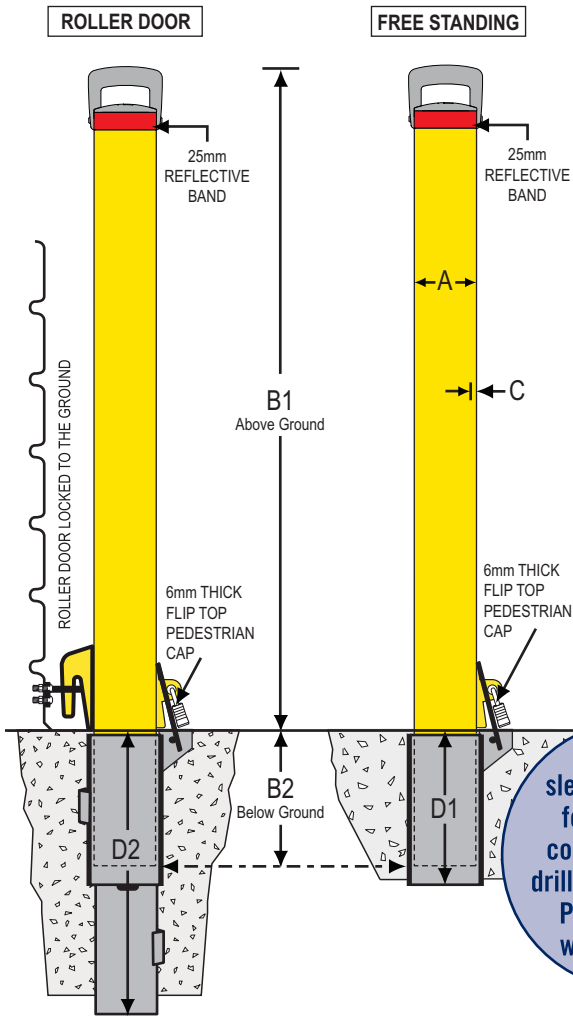


Heavy duty brackets for roller door model.



Sleeves with built-in pedestrian cap.

POST PART No.	POST Description	POST Finish	A (mm)	B1 (mm)	B2 (mm)	C (mm)	POST (kgs)	CORED SLEEVE Part No.	D1 (mm)	CONCRETE SLEEVE Part No.	D2 (mm)
BCL90	90mm freestanding post	Galvanised & Powder coated	90	950	200	5	12.3	BCL90S-CD	225	BCL90S-NC	425
BCL90-G	90mm freestanding post	Galvanised only	90	950	200	5	12.3	BCL90S-CD	225	BCL90S-NC	425
BCL90-SS	90mm freestanding post	316 stainless steel	90	950	200	3.05	9.0	BCL90SS-CD	225	BCL90SS-NC	425
BCL90RD	90mm roller door post with brackets	Galvanised & Powder coated	90	950	200	5	12.5	BCL90S-CD	225	BCL90S-NC	425
BCL90RD-G	90mm roller door post with brackets	Galvanised only	90	950	200	5	12.5	BCL90S-CD	225	BCL90S-NC	425
BCL140	140mm freestanding post	Galvanised & Powder coated	140	1050	200	5	21	BCL140S-CD	225	BCL140S-NC	425
BCL140-G	140mm freestanding post	Galvanised only	140	1050	200	5	21	BCL140S-CD	225	BCL140S-NC	425
BCL140-SS	140mm freestanding post	316 stainless steel	140	1050	200	3.4	17	BCL140SS-CD	225	BCL140SS-NC	425
PART No. Accessories			PART No.		Accessories						
BCL90H	Cam-Lok 90mm surface mount storage unit		BHH		Wall mount bollard storage unit						
BCL140H	Cam-Lok 140mm surface mount storage unit		BCLKEY		Cam-Lok additional registered key						



## SLEEVE-LOK REMOVABLE BOLLARDS Below Ground

### Features:

- Available in three diameters.
- Thousands installed in a wide variety of indoor and outdoor applications over a 14 year period.
- Widely used for managing vehicle access in restricted areas. These include industrial sites, parks and gardens and numerous other public space environments.
- Sleeve-Loks use a simple padlock design whereby the cap on the in-ground sleeve is secured to a high strength steel shackle welded onto the bollard.
- Sleeve-Lok removable bollards come in two styles. Freestanding and roller door models, for the protection of factory roller shutter doors.
- Cast aluminium caps and handles finished in a silver grey metallic powder coat.
- **All bollards are hot dipped galvanised during manufacture.**
- Hot dipped galvanising has a dramatic impact on reducing corrosion and increasing the service life of the bollard.

**In-ground sleeves available for either new concrete or core drilled installations. Please specify when ordering**



**Bollard storage unit.**



**Surface mount bollard holder.**



**High security padlock.**



**Heavy duty roller door brackets.**

POST PART No.	POST Description	POST Finish	A (mm)	B1 (mm)	B2 (mm)	C (mm)	POST (kgs)	CORED SLEEVE Part No.	D1 (mm)	CONCRETE SLEEVE Part No.	D2 (mm)
BSL63	63mm freestanding post	Galvanised & Powder coated	63	900	150	1.6	4.5	BSL63S-CD	150	BSL63S-NC	300
BSL63-G	63mm freestanding post	Galvanised only	63	900	150	1.6	4.5	BSL63S-CD	150	BSL63S-NC	300
BSL90	90mm freestanding post	Galvanised & Powder coated	90	950	200	5	12	BSL90S-CD	225	BSL90S-NC	425
BSL90-G	90mm freestanding post	Galvanised only	90	950	200	5	12	BSL90S-CD	225	BSL90S-NC	425
BSL90RD	90mm roller door post with brackets	Galvanised & Powder coated	90	950	200	5	12.2	BSL90S-CD	225	BSL90S-NC	425
BSL90RD-G	90mm roller door post with brackets	Galvanised only	90	950	200	5	12.2	BSL90S-CD	225	BSL90S-NC	425
BSL140	140mm freestanding post	Galvanised & Powder coated	140	1050	200	5	21	BSL140S-CD	225	BSL140S-NC	425
BSL140-G	140mm freestanding post	Galvanised only	140	1050	200	5	21	BSL140S-CD	225	BSL140S-NC	425
PART No.	Accessories		PART No.	Accessories							
BSL63H	Sleeve-Lok 63mm surface mount storage unit		BPL2	High security 9mm shielded padlock (2 keys)							
BSL90H	Sleeve-Lok 90mm surface mount storage unit		BHH	Wall mount bollard storage unit							
BSL140H	Sleeve-Lok 140mm surface mount storage unit										



## TEE-LOK REMOVABLE BOLLARDS

### Surface Mount

#### Features:

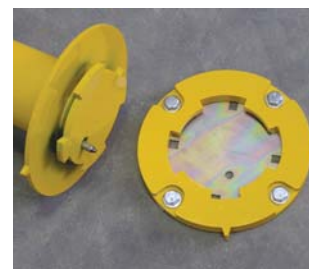
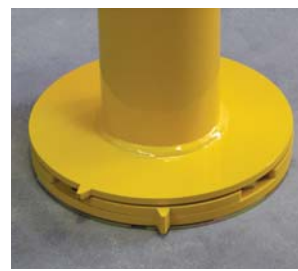
- Strong 90mm post with 5mm thick wall.
- Heavy steel receiver shoe only 20mm high when post removed.
- Requires only 4 off 12mm holes, 65mm deep.
- No core drilling or slab.
- Internal locking system with unique **Tee-Lok** 'T' handle keys.
- Fixings for receiver shoe are inaccessible when post is locked in place.
- Optional colours available on request.

**Tee-Lok system**

<b>Material:</b>	Steel post 90mm diameter, 5mm wall.
<b>Finish:</b>	Hot dipped galvanised prior to Safety Yellow powder coat.
<b>Height:</b>	950mm post height. Receiver shoe only 20mm high with post removed.
<b>Weight:</b>	Post – 11.9kgs. Receiver shoe – 2.9kgs.
<b>Installation:</b>	4 off 12 x 65mm sleeve anchors.

**Note:** Bollard and receiver shoe sold separately.

PART No.	DESCRIPTION
SMTL	Tee-Lok surface mount bollard
BRKEY	Additional 'T'-handle key for Tee-lok
SMCLH	Receiver shoes for Cam-Lok / Tee-lok (Also used as a storage unit for bollards)



## CAM-LOK REMOVABLE BOLLARDS

### Surface Mount

#### Features:

- Strong 90mm post with 5mm thick wall.
- Bollard hot dipped galvanised prior to powder coating.
- Heavy steel receiver shoe only 20mm high.
- Requires only 4 off 12mm holes, 65mm deep.
- No core drilling or slab penetration.
- Internal locking system with high security **Cam-Loks** with registered keys.
- Fixings for receiver shoe are inaccessible when post is locked in place.
- Optional colours available on request.

**Cam-Lok system**

<b>Material:</b>	Steel post 90mm diameter, 5mm wall.
<b>Finish:</b>	Hot dipped galvanised prior to Safety Yellow powder coat.
<b>Height:</b>	950mm post height. Receiver shoe only 20mm high with post removed.
<b>Weight:</b>	Post – 11.9kgs. Receiver shoe – 2.9kgs.
<b>Installation:</b>	4 off 12 x 65mm sleeve anchors.

**Note:** Bollard and receiver shoe sold separately.

PART No.	DESCRIPTION
SMCL	Cam-Lok surface mount bollard
BCLKEY	Additional Cam-Lok registered key
SMCLH	Receiver shoes for Cam-Lok / Tee-lok (Also used as a storage unit for bollards)

**316**  
Marine grade stainless steel also available



## RETRACTABLE BOLLARDS

### Features:

- Locks in both up and down positions.
- Strong circular design 90mm diameter in mild steel or stainless steel.
- Black anti-slip surface on top of bollard.
- Unique low cost 'T' handle key.
- Convenient, no loose posts to store.
- Galvanised in ground casing.
- Available hot dipped galvanised with a powder coated finish or 316 grade stainless steel bollards.
- Trouble free design. Only two moving parts.
- Internal locking system can't be tampered with or fouled by dirt or water. **Note: Two keys supplied per order. Additional keys may be purchased.**



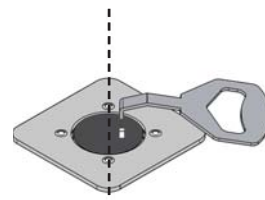
- Material:** Bollards 90mm diameter with 5mm mild steel or 3.05mm 316 stainless steel wall. In ground casing 140mm with 5mm wall mild steel.
- Finish:** Hot dipped galvanised with powder coated finish or marine grade 316 stainless steel. In-ground casings for all models are hot dipped galvanised.
- Height:** Above ground 900mm. Below ground 1150mm.
- Weight:** BR900 41.5kgs, Operating 6kgs. BR900-SS 38kgs, Operating 4kgs.
- Locking:** Unique internal locking mechanism with 'T' handle key.
- Installation:** Excavation and concrete footing.

PART No.	DESCRIPTION
BR900	Retractable bollard assembly – galvanised & powder coated
BR900R	Replacement bollard
BR900-SS	Retractable bollard assembly – 316 stainless steel
BR900R-SS	Replacement 316 stainless steel bollard
BRKEY	Additional 'T' handle key for retractable bollard

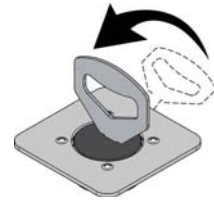
Phone us or visit our website for more information!

## Locking Procedure

### RETRACTABLE BOLLARDS



1. Insert key to short side.



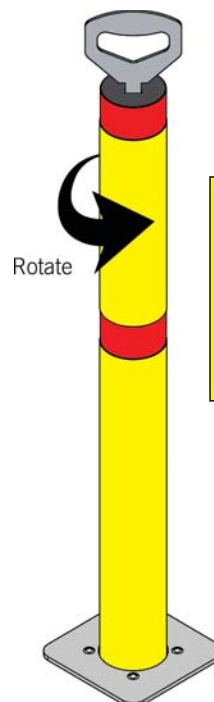
2. Fully insert and pivot key to upright position.



3. Rotate to unlock then lift.



4. Lift until fully extended.



5. Rotate to lock.



6. Confirm bollard is locked.



## MULCH & MOW RINGS

### Galvanised Steel Tree Rings

#### Features:

1. The outward facing angle allows mowers to get right up to the rings eliminating the need for additional edge trimming.
2. Installation is quick and simple, each ring is held securely in place by 4 off 300mm galvanised steel spikes (supplied). Rings are easy to relocate.
3. Mulch & Mow Rings are supplied in two halves for fitting around larger established trees. The two halves simply bolt together with the fixings supplied.
4. Rings act as an active barrier to weeds and reduces mulch loss through wind and bird scratching, thus retaining moisture in the tree roots.

### Mulch & Mow Rings enhance a neat and tidy landscape.

**Material:** 5mm thick rolled mild steel angle.

**Sizes:** MM600G – 600 x 50 x 50 x 5mm angle  
MM900G – 900 x 75 x 75 x 5mm angle.  
MM1200G – 1200 x 75 x 75 x 5mm angle.

**Weight:** 600 (9kgs), 900 (18kgs), 1200 (24kgs).

**Finish:** Hot dipped galvanised.

**Installation:** 4 off 300mm galvanised spikes (supplied).

PART No.	RAILS
MM600G	Mulch & Mow tree ring 600mm dia. with all fixings (supplied)
MM900G	Mulch & Mow tree ring 900mm dia. with all fixings (supplied)
MM1200G	Mulch & Mow tree ring 1200mm dia. with all fixings (supplied)
SPIKES	Additional 300 x 12mm galvanised spike (each)

## THE ZEPHYR...a soft and gentle breeze

In a busy city 'Zephyr' is a stunning short or long term bicycle storage solution. Incorporate it into a cutting edge architectural design and it becomes a sculptured bollard, a classic design element. In the town square or park it's a gathering point, a place to stop, to chat, to bide a while with friends. Or then again, is it simply a beautiful piece of public sculpture, one that invites you to run your hands over its sumptuous metallic form, its smooth and generous curves?

**Feel the breeze!**



See pages  
76 & 77  
to feel the  
breeze!



## W-BEAM GUARD FENCE (TYPE D)

### Features:

- Designed for asset protection, and the protection of pedestrians from slow moving vehicles in and around industrial and commercial complexes and car parks.
- Complies to VicRoads SD3671-E requirements for 'Type D' guard fence.
- With a choice of rail lengths, post options and accessories W-Beam Guard Fence can be easily configured for most non-highway applications.
- Modular design with a range of accessories.
- Hot dipped galvanised for maximum long term protection.
- Guard rails interchangeable with competitors W-Beam systems.
- Posts are supplied with necessary fixings.

<b>Material:</b>	Posts – Mild steel 178 x 76 x 6mm. Rails – Mild steel 2.75mm thick in eight standard lengths.
<b>Finish:</b>	All components hot dipped galvanised.
<b>Weight:</b>	Posts – 18kgs (approx.) Rails – 13kgs per metre (approx.)
<b>Installation:</b>	Surface mount or in-ground.

### NOTES ON USE:

**Barrier Group W-BEAM GUARD FENCE (Type D) has been configured for use as an asset protection system for non-highway applications. It shall only be used where impact speeds are less than 30 km/h. (eg. In parking areas, factories and warehouses etc.)**



W-Beam Single Rail.



W-Beam Double Rail.



W-Beam Single Rail with Ball-Fence.

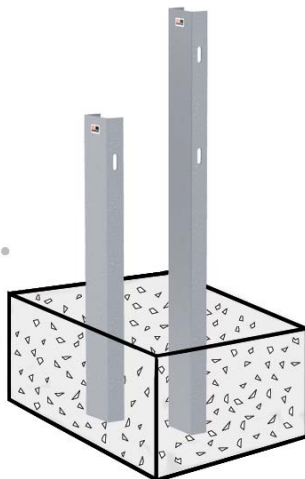


W-Beam used for racking end protection.



PART No.	RAILS
WBR500-2G	W-Beam rail for 0.5 metre centres (requires 2 posts)
WBR1000-2G	W-Beam rail for 1 metre centres (requires 2 posts)
WBR1500-2G	W-Beam rail for 1.5 metre centres (requires 2 posts)
WBR2000-2G	W-Beam rail for 2 metre centres (requires 2 posts)
WBR2500-2G	W-Beam rail for 2.5 metre centres (requires 2 posts)

PART No.	RAILS
WBR3000-3G	W-Beam Rail for 3 metre centres (requires 3 posts)
WBR3500-3G	W-Beam Rail for 3.5 metre centres (requires 3 posts)
WBR4000-3G	W-Beam Rail for 4 metre centres (requires 3 posts)
KIT10	W-Beam Splice Fixing Kit (8 off M16 x 32 bolts with nuts)



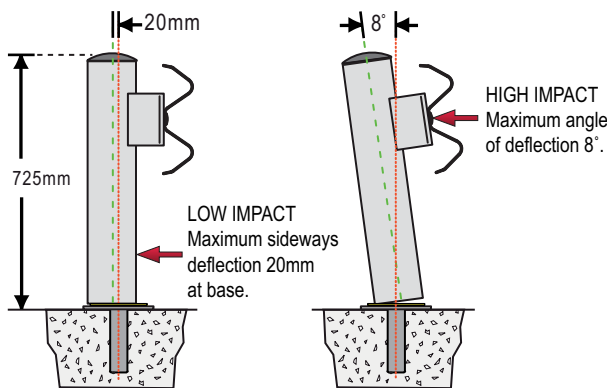
Rail fixings included

PART No.	BELOW GROUND POSTS
WBP1225-BG	W-Beam single rail below ground post 1225mm – Galvanised
WBP1760-D-BG	W-Beam double rail below ground post 1760mm – Galvanised

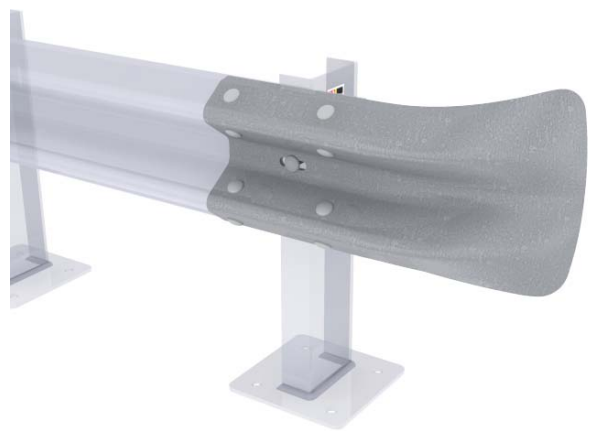


Rail fixings included

PART No.	SURFACE MOUNT POSTS
WBP400-SM	W-Beam single rail surface mount post 400mm – Galvanised
WBP725-SM	W-Beam single rail surface mount post 725mm – Galvanised
WBP1140-D-SM	W-Beam double rail surface mount post 1140mm – Galvanised

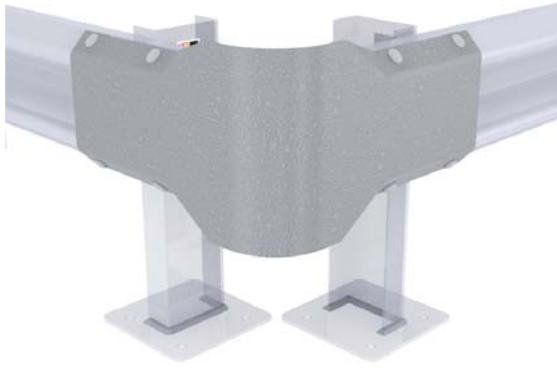


PART No.	SHOCK ABSORBING POSTS
WBSAP725-CD	W-Beam shock absorbing post 725 x 140mm – Core drilled (Galvanised)
WBSAP725-SM	W-Beam shock absorbing post 725 x 140mm – Surface mount (Galvanised)
WBSAP1140-D-CD	W-Beam double height shock absorbing post 1140 x 140mm – Core drilled (Galvanised)
WBSAP1140-D-SM	W-Beam double height shock absorbing post 1140 x 140mm – Surface mount (Galvanised)



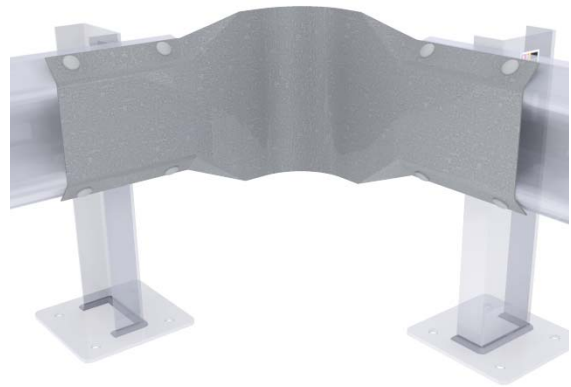
End terminal fixings included

PART No.	FISH TAIL ENDS
WBFT	W-Beam fish tail end terminal 710 x 3mm – Galvanised
WBFT-Y	W-Beam fish tail end terminal – Yellow powder coated



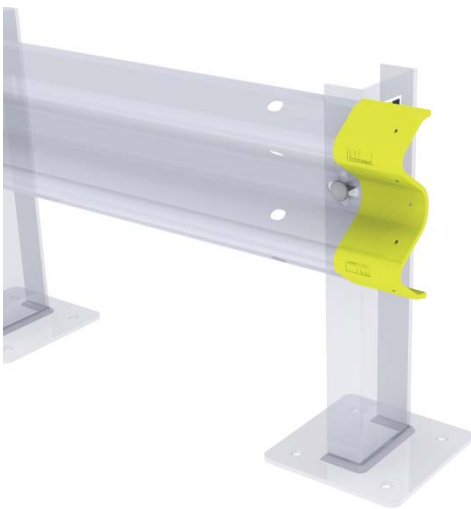
Connector fixings included

PART No.	EXTERNAL CONNECTORS
WB90EC	W-Beam 90 degree external connector – Galvanised
WB90EC-Y	W-Beam 90 degree external connector – Yellow powder coated



Connector fixings included

PART No.	INTERNAL CONNECTORS
WB90IC	W-Beam 90 degree internal connector – Galvanised
WB90IC-Y	W-Beam 90 degree internal connector – Yellow powder coated



PART No.	HI-VIS BOOT
WBRB	W-Beam rail end boot



End terminal fixings included

PART No.	STUBBY NOSE ENDS
WBSN	W-Beam stubby nose end terminal 710 x 3mm – Galvanised
WBSN-Y	W-Beam stubby nose end terminal – Yellow powder coated



Fixings included

PART No.	BALL-FENCE GATES
BFG	Ball-Fence self-closing gate (complete with hoop) – Galvanised
BFG-P	Ball-Fence self-closing gate (complete with hoop) – Yellow powder coated
BFGPWB-SM	Ball-Fence gate post 48 x 1017mm – Galvanised



Ball-Fence fixings included

PART No.	BALL-FENCE HAND RAILS
BFTP-WB	W-Beam/Ball-Fence through post – Galvanised
BFEP-WB	W-Beam/Ball-Fence end post – Galvanised
BFHR	Ball-Fence hand rail 32 NB x 6 metres – Galvanised



**BEST  
VALUE**



## BALL-FENCE Hand Rail System

### Features:

- Modular handrail system that includes stanchions in a range of configurations.
- Components are assembled on site or can be partially assembled in our factory and delivered to site in sections for simple fixing. (Charges apply).
- Design flexibility.
- Components are all hot dipped galvanised.
- Complies to Australian Standard AS 1657:1992.
- Suitable for indoor and outdoor use.
- Self closing gates available.

**Material:** Post – 48.3mm O.D. (40mm N.B.)  
Handrail – 42.4mm O.D. (32 N.B.)  
Kneerail – 33.7mm O.D. (25 N.B.)

**Finish:** Hot dipped galvanised.

**Height:** Ground handrail centre 1017mm.  
Ground kneerail centre 560mm.

**Spacing:** Max post spacing 2 metres  
centre to centre.



See also Ball-Fence Gates on page 20.



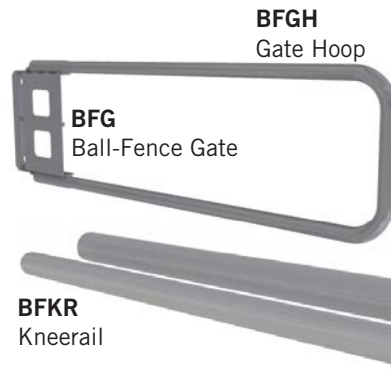
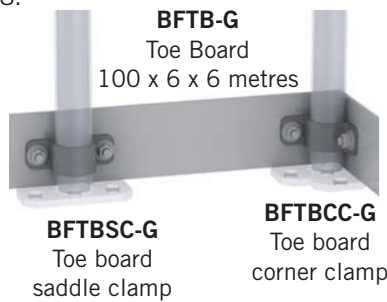
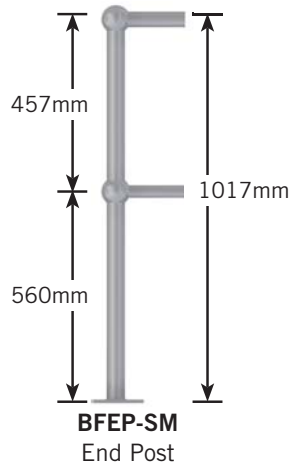
See also Ball-Fence with W-Beam on page 20.



See also Menni Asset Protection for Ball-Fence on page 21.



See also Double Rail U-Bars on page 21.



PART No.	DESCRIPTION
<b>BFHR</b>	Hand rail 32 N.B. x 6 metres
<b>BFKR</b>	Knee rail 25 N.B. x 6 metres
<b>BFEP-SM</b>	End post (Surface mount)
<b>BFEP-BG</b>	End post (Below ground)
<b>BFTP-SM</b>	Through post (Surface mount)
<b>BFTP-BG</b>	Through post (Below ground)
<b>BFCP-SM</b>	Corner post (Surface mount)
<b>BFCP-BG</b>	Corner post (Below ground)
<b>BFG</b>	Ball-Fence gate (complete with hoop) – Galvanised
<b>BFG-P</b>	Ball-Fence gate (complete with hoop) – Powder coated
<b>BFGPWB-SM</b>	Ball-Fence gate post – Galvanised
<b>BFGP90SM-G</b>	Ball-Fence freestanding gate post 90 x 1050mm – Galvanised

PART No.	DESCRIPTION
<b>BFB32</b>	Bend 90° x 32 N.B.
<b>BFB25</b>	Bend 90° x 25 N.B.
<b>BFCB</b>	Closure bend
<b>BFGH</b>	Additional 1.5 metre gate hoop
<b>BFSJ32</b>	Slip joint 32 N.B.
<b>BFSJ25</b>	Slip joint 25 N.B.
<b>BFTP-AF</b>	Through post adjustable foot
<b>BFCP-AF</b>	Corner post adjustable foot
<b>BFTP</b>	Taper pin
<b>BFTB-G</b>	Ball-Fence toe board 100 x 6 x 6 metres – Galvanised
<b>BFTBSC-G</b>	Toe board saddle clamp – Galvanised
<b>BFTBCC-G</b>	Toe board corner clamp – Galvanised

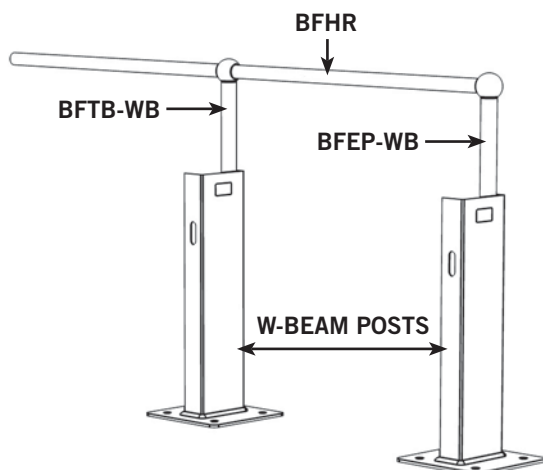


## BALL-FENCE with W-Beam

### Features:

- Designed to comply with AS 1657:1992 for walkways.
- Bolt Ball-Fence posts directly to W-Beam posts with supplied fixings.
- Up to 100mm of vertical adjustment.
- All components hot dipped galvanised.
- Compatible with other Ball-Fence components.

<b>Material:</b>	Posts 48.3 O.D. (40 N.B.) Hand Rail 42.4 O.D. (32 N.B.)
<b>Finish:</b>	Hot dipped galvanised.
<b>Height:</b>	Adjustment up to 45mm.
<b>Installation:</b>	Bolt together with fixings (supplied).
<b>Note:</b>	<b>Ball-Fence posts should be mounted to pedestrian side of W-Beam posts.</b>



Typical installation of Ball-Fence posts to W-Beam posts.

PART No.	DESCRIPTION
BFTB-WB	W-Beam/Ball-Fence through post – Galvanised
BFEP-WB	W-Beam/Ball-Fence end post – Galvanised
BFHR	Ball-Fence hand rail 32 N.B. x 6 metres – Galvanised



## BALL-FENCE GATES

Ball-Fence Gates come complete with a standard galvanised tubular hoop (42.4mm diameter) to suit a maximum 1500mm opening for single gates or 3000mm for double gates. Hoops can be simply cut down to any length and fitted into the receiver tubes on the gate assembly.

### Features:

- Gas strut self closure
- Fully adjustable hoop length.
- Built-in gate stop.
- Swing inward or outward.
- Suits openings up to 3 metres (double gates).
- Use as single or double gates.
- Can be retrofitted to existing sites.
- Both models hot dipped galvanised.
- Simple installation.

<b>Material:</b>	Heavy steel construction. Hoop – 42.4 O.D. (32mm N.B.) medium gauge tube. (Optional gate posts, see below).
<b>Weight:</b>	18kgs – Complete assembly with 1.5 metre hoop.
<b>Finish:</b>	Hot dipped galvanised or powder coated.
<b>Height:</b>	Matches up to hand & knee rails on fence.
<b>Opening:</b>	Single gates up to 1.5 metres. Double gates up to 3 metres.
<b>Installation:</b>	Bolts to existing square or round posts or any flat surfaces.

PART No.	DESCRIPTION
BFG	Ball-Fence gate (complete with hoop) – Galvanised
BFG-P	Ball-Fence gate (complete with hoop) – Powder coated
BFGP90SM-G	Ball-Fence gate post 90 x 1050mm – Galvanised
BFGPWB-SM	Ball-Fence gate post 48 x 1017mm – Galvanised
BFGH	Additional 1.5 metre gate hoop



More information on Menni 28

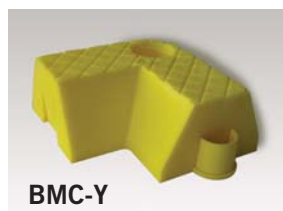
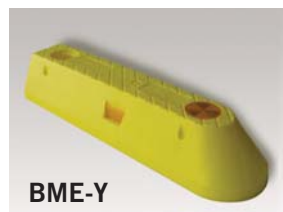
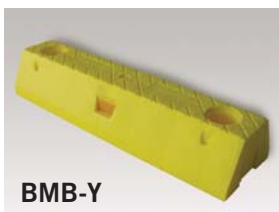
## MENNI ASSET PROTECTION for Ball-Fence

### Features:

- Protects Ball-Fence while preventing the intrusion of forklift tynes or pallets into pedestrian walkways.
- 'Plug & Play' asset protection.
- Solid colour, U.V. stabilised.
- Supplied with all fixings and connectors.
- Slip resistant feature moulded into top surface.
- Modular components allows modification or replacement at any time.

Ball-Fence specifications and part numbers on pages 18-19.

- Material:** Linear Low Density Polyethylene (LLDPE).
- Finish:** Solid colour – Hi-Vis Safety Yellow.
- Fixings:** Two per module (supplied).
- Connectors/ plugs:** Three per module (supplied).



PART No.	DESCRIPTION
BME-Y	Menni end module – Yellow
BMB-Y	Menni body module – Yellow
BMT-Y	Menni T-intersection module – Yellow
BMC-Y	Menni 90 degree corner module – Yellow
BMR	Optional top reflector plugs



## U-BARS Double Rail

### Features:

- Available in three sizes in either below ground or surface mount.
- Heavy 3mm wall, 48.3mm diameter pipe.
- Fully welded one-piece construction.
- Hot dipped galvanised for outdoor use.
- Ready for installation, no assembly required.

- Material:** Steel pipe 48.3mm diameter, 3mm wall.
- Finish:** Hot dipped galvanised (powder coating optional).
- Height:** Above ground 1040mm. Below ground 300mm.
- Width:** UBD100 models 1000mm. UBD150 models 1500mm. UBD200 models 2000mm.
- Weight:** UBD100 models 16kgs (approx.) UBD150 models 19.5kgs (approx.) UBD200 models 23.5kgs (approx.)
- Installation:** Surface mount models base plate 150 x 75 x 10mm. Below ground models come with welded concrete starter bars.
- Fixings:** Supplied with surface mount models.

PART No.	DESCRIPTION
UBD100SM-G	1 metre surface mount double rail U-Bar (Galvanised)
UBD100BG-G	1 metre below ground double rail U-Bar (Galvanised)
UBD150SM-G	1.5 metre surface mount double rail U-Bar (Galvanised)
UBD150BG-G	1.5 metre below ground double rail U-Bar (Galvanised)
UBD200SM-G	2 metre surface mount double rail U-Bar (Galvanised)
UBD200BG-G	2 metre below ground double rail U-Bar (Galvanised)



## U-BARS Standard Duty

### Features:

- Suitable for a wide range of uses.
- Heavy 3mm thick wall tube.
- Hot dipped galvanised finish or powder coated.
- Powder coating or reflective options available.
- Surface mount and below ground models.
- Surface mount supplied with fixings.
- No assembly – ready for installation.

<b>Material:</b>	Steel pipe 48mm diameter, 3mm wall.
<b>Finish:</b>	Safety Yellow powder coat and galvanised or galvanised only.
<b>Height:</b>	Above ground 800mm. Below ground 300mm.
<b>Width:</b>	BR1 models 850mm. BR2 models 400mm.
<b>Weight:</b>	BR1 models 9.2kgs (approx.) BR2 models 8.5kgs (approx.)
<b>Installation:</b>	6mm thick surface flange 150mm in diameter with 8 off 10 x 50mm masonry anchors for surface mount model. Below ground model has welded concrete starter bars.
<b>Fixings:</b>	Supplied with surface mount models.

PART No.	DESCRIPTION
BR1G-SM	Bike rail 850 x 800mm surface mount – Galvanised
BR1P-SM	Bike rail 850 x 800mm surface mount – Powder coated
BR1G-BG	Bike rail 850 x 1100mm below ground – Galvanised
BR1P-BG	Bike rail 850 x 1100mm below ground – Powder coated
BR2G-SM	Bike rail 400 x 800mm surface mount – Galvanised
BR2P-SM	Bike rail 400 x 800mm surface mount – Powder coated
BR2G-BG	Bike rail 400 x 1100mm below ground – Galvanised
BR2P-BG	Bike rail 400 x 1100mm below ground – Powder coated



## U-BARS Heavy Duty

### Features:

- Heavy duty 5mm thick wall.
- Three standard lengths.
- Flexible modular design.
- Hot dipped galvanised finish.
- Powder coating option available.
- Surface mount and below ground models.
- Easy on site assembly with fixings supplied.

<b>Material:</b>	Steel pipe 90mm diameter, 5mm wall.
<b>Finish:</b>	Hot dipped galvanised (powder coating optional).
<b>Height:</b>	Above ground 700mm. Below ground 500mm.
<b>Width:</b>	1000, 1500 or 2000mm.
<b>Weight:</b>	UB100 models 31kgs (approx.) UB150 models 36kgs (approx.) UB200 models 41kgs (approx.)
<b>Installation:</b>	6mm thick surface flange 225mm in diameter with 8 off 12 x 60mm masonry anchors for surface mount model. Below ground model has welded concrete starter bars.
<b>Fixings:</b>	Supplied with surface mount models. Connector pins supplied with all models.

PART No.	DESCRIPTION
UB100SM-G	U-Bar 1 metre surface mount (2 piece) – Galvanised
UB100BG-G	U-Bar 1 metre below ground (2 piece) – Galvanised
UB150SM-G	U-Bar 1.5 metre surface mount (3 piece) – Galvanised
UB150BG-G	U-Bar 1.5 metre below ground (3 piece) – Galvanised
UB200SM-G	U-Bar 2 metre surface mount (3 piece) – Galvanised
UB200BG-G	U-Bar 2 metre below ground (3 piece) – Galvanised



## ECONO-RAIL Standard Duty

### Features:

- All components galvanised prior to powder coating.
- Powder coated rails available in three standard lengths or can be cut down on site.
- Comes with all fittings and fixtures.
- Rails can come off posts at any angle for changes in direction using our unique post to rail adapters.
- Highly visible Safety Yellow powder coated finish.
- Available in surface mount only.

**Material:** Posts – 63.5mm diameter, 1.6mm wall, 1050mm high.  
 Rails – 30 x 60mm oval galvanised tube with 2mm wall.

**Finish:** Galvanised and Safety Yellow powder coat.

**Height:** Post height 1050mm.

**Rail lengths:** 1, 1.5, or 2 metres.

**Weight:** Posts – 4kgs.  
 Rails – 2kgs metre.

**Installation:** 3 off 10 x 50mm masonry anchors per post (supplied).

PART No.	DESCRIPTION
ER63-SM	Surface mount post
ER631	1 metre rail with connectors
ER6315	1.5 metre rail with connectors
ER632	2 metre rail with connectors



## POST & RAIL Heavy Duty

### Features:

- Strong 90mm or 140mm diameter posts with 5mm thick walls.
- 90mm Post & Rail also available as complete kits.
- 6mm thick base plates with four bolt fixings.
- Galvanised prior to powder coating.
- Sculpted hand rails in five standard lengths.
- Suitable on slopes or ramps.
- Available in surface mount or below ground models.

**Material:** Posts – 90 or 140mm diameter, 5mm wall.  
 Rails – 100 x 50mm tube, 2mm wall.

**Finish:** Galvanised and Safety Yellow powder coat.

**Height:** Post height 1050mm above ground  
 Rail centres 500mm.

**Rail lengths:** 2, 3, 4, 5, or 6 metres.

**Weight:** 90mm post – 9kgs.  
 140mm post – 25kgs.  
 Rails – 4.25kgs per metre.

**Installation:** 90mm post – 4 x 12 x 60mm masonry anchors per post (supplied).  
 140mm post – 4 x 16 x 65mm masonry anchors per post (supplied).

PART No.	POST & RAIL COMPONENTS
PR90SMD	Surface mount post 90mm diameter
PR140SMD	Surface mount post 140mm diameter
PR90BGD	In-ground post 90mm diameter
PR906	6 metre rail (replacement) requires 3 posts
PR905	5 metre rail (replacement) requires 3 posts
PR904	4 metre rail (replacement) requires 2 posts
PR903	3 metre rail (replacement) requires 2 posts
PR902	2 metre rail (replacement) requires 2 posts

PART No.	POST & RAIL KITS
PR906K-SM	Surface mount kit (3 x posts, 2 x 6m rails) – 6 metre
PR905K-SM	Surface mount kit (3 x posts, 2 x 5m rails) – 5 metre
PR904K-SM	Surface mount kit (2 x posts, 2 x 4m rails) – 4 metre
PR903K-SM	Surface mount kit (2 x posts, 2 x 3m rails) – 3 metre
PR902K-SM	Surface mount kit (2 x posts, 2 x 2m rails) – 2 metre



## CHANNEL RAIL

### Features:

- Quick & simple to install no site welding.
- Completely modular design.
- Post & rails powder coated Safety Yellow.
- All components are hot dipped galvanised.
- All fixings supplied.
- Full range of spare parts available.
- Channel protects lower limbs from fork tynes.
- Can be customised if required.

**Material:** Posts – 60.3mm dia. x 1027mm high, 3.6mm wall. Safety Yellow powder coat.  
 Rails – 30 x 60 x 2mm galvanised oval tube. Safety Yellow powder coat.  
 Channel – Heavy duty 200 x 75 x 5.2mm channel galvanised finish.

**Weight:** Posts – 7.4kgs.  
 Rails – 2kgs per metre.  
 Channel – 15.5kgs per metre.

**Installation:** 3 off 12 x 60mm masonry anchors per post (supplied).

PART No.	CHANNEL RAIL COMPONENTS
CR60SM	Surface mount post (replacement)
CR201	Floor channel 1 metre (replacement)
CR601	Rail 1 metre (replacement)
CR2015	Floor channel 1.5 metre (replacement)
CR6015	Rail 1.5 metre (replacement)
CR202	Floor channel 2 metre (replacement)
CR602	Rail 2 metre (replacement)
CR203	Floor channel 3 metre (replacement)
CR603	Rail 3 metre (replacement)
CR206	Floor channel 2 x 3 metre (replacement)
CR606	Rail 6 metre (replacement)
KIT9	Fixings (1 post)

PART No.	CHANNEL RAIL KITS
CR10K	1 metre channel rail kit (2x surface mount posts, 1 x 1m floor channel, 2x 1m rails)
CR15K	1.5 metre channel rail kit (2x surface mount posts, 1 x 1.5m floor channel, 2x 1.5m rails)
CR20K	2 metre channel rail kit (2x surface mount posts, 1 x 2m floor channel, 2x 2m rails)
CR30K	3 metre channel rail kit (3x surface mount posts, 1 x 3m floor channel, 2x 3m rails)
CR60K	6 metre channel rail kit (5x surface mount posts, 2 x 3m floor channel, 2x 6m rails)



## DE-FENCE SAFETY FENCE

### The De-Fence System

De-Fence is a modular guarding and fencing system that has been designed to comply with AS 4024.1–2006 (Series).

De-Fence is simple to install, flexible and configures to the widest range of applications. The system comprises a range of standard panel lengths from 500 to 2000mm with the option of welded mesh or polycarbonate infill, plus a choice of two post heights.

### Features:

- Designed for AS 4024.1–2006 (Series) for machinery guarding.
- Ideal for exclusion areas or zoning off work cells.
- Tamper resistant fixings on all connections.
- Any fixing panel can easily become a swing gate.
- Sliding gate options available.
- Supported by a range of latches and accessories.
- Two standard post heights and five standard panel lengths available.

For full details and ordering  
**92**





## POST-Q Fence System

### Features:

- Strong, flexible, lightweight and highly visible.
- Ease of installation with design flexibility.
- Solid moulded colour.
- Virtually maintenance free.
- Maximum panel opening 80mm (child-safe).
- Panels can be cut down as required.

**Material:** Post-Q – Blow moulded polyethylene.  
Posts – Surface mount galvanised steel 875mm long.

**Finish:** Post-Q – Solid colour Hi-Vis Orange.  
Posts – Hot dipped galvanised.

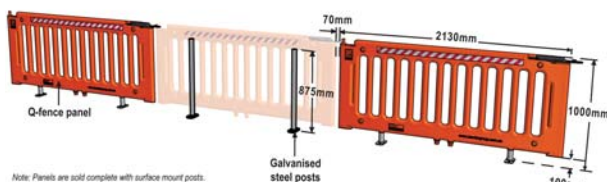
**Height:** Floor to top of panel 1000mm.

**Panel length:** 2130mm.

**Weight:** Panel (including posts) – 14kgs (approx.)

**Fixings:** Supplied with masonry anchors 4 off 16 x 65mm.

**Galvanised posts:** The internal posts used in Post-Q are manufactured from 48.3mm diameter hot dipped galvanised steel with a welded base plate for surface mounting. Post mounting leaves the Q-Fence panels elevated above the floor for ease of cleaning.



Note: Panels are sold complete with surface mount posts.

PART No.	DESCRIPTION
PQ2130	Post-Q fence panel with 2 galvanised posts
QFP-SM	Additional Q-Fence posts with fixings



## MENNI-Q Fence System

### Features:

- Impact absorbing materials are perfect for protection against forklifts.
- Menni modules offer protection from forklift tyres etc.
- Strong, flexible, lightweight and highly visible.
- Ease of assembly with design flexibility.
- Solid moulded colour.
- Virtually maintenance free.
- Maximum panel opening 80mm (child-safe).
- Panels can be cut down as required.
- Drainage channels prevent water pooling.

**Material:** Panels & Menni modules – moulded polyethylene.  
Internal posts – Fibre reinforced plastic.

**Finish:** Panels – Solid colour Hi-Vis Orange.  
Menni – Solid colour Safety Yellow.

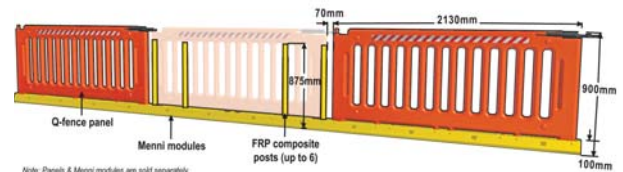
**Height:** Floor to top of panel 1000mm.

**Panel length:** 2130mm.

**Weight:** Panels & Menni – 10kgs/metre (approx.)

**Fixings:** Supplied.

**FRP posts:** The internal posts used in Menni-Q are manufactured from 50mm diameter Fibre Reinforced Plastic with a 5mm thick wall. FRP combines incredible strength with flexibility, allowing the Menni-Q fence to absorb considerable impact without damage.



Note: Panels & Menni modules are sold separately.

PART No.	DESCRIPTION
MQ2130	Menni-Q fence panel with posts – Hi-Vis Orange
BME-Y	Menni end module – Yellow
BMB-Y	Menni body module – Yellow
BMT-Y	Menni T-intersection module – Yellow
BMC-Y	Menni 90 degree corner module – Yellow





### BULL-DOG BRACKETS Standard Pallet Racking Leg Guards

Pallet racking legs are often supporting many tonnes of product. Protecting these legs is of vital importance to avoid potential disasters caused as a result of impact by forklifts or trolleys. Bull-Dog brackets are manufactured from heavy steel plate and bolt to the warehouse floor independent of the racking, therefore isolating any impact from the structural members of the racking system.

#### Features:

- Designed to comply with AS 4084-2012.
- Manufactured from 5mm thick steel plate.
- Four bolt fixing for maximum security.
- Powder coated high visibility Safety Yellow.
- Protects your investment and reduces the risk of collapse due to impact.
- Quick and simple to install without the need for down time.
- Comes complete with fixings.
- Mounted independently of racking to avoid impact transference.

PART No.	DESCRIPTION
BDB	Bull-Dog bracket – 210 x 150 x 400 x 5mm



### BULL-DOG BRACKETS Big Foot Pallet Racking Leg Guards

#### Features:

- Designed to comply with AS 4084-2012.
- 200mm internal clearance for large frame base plates.
- 500mm high for increased protection and visibility.
- Manufactured from 6mm thick mild steel.
- Powder coated high visibility Safety Yellow.
- Mounts independently of racking with fixings supplied.

PART No.	DESCRIPTION
BDB500	Bull-Dog bracket – 250 x 150 x 500 x 6mm

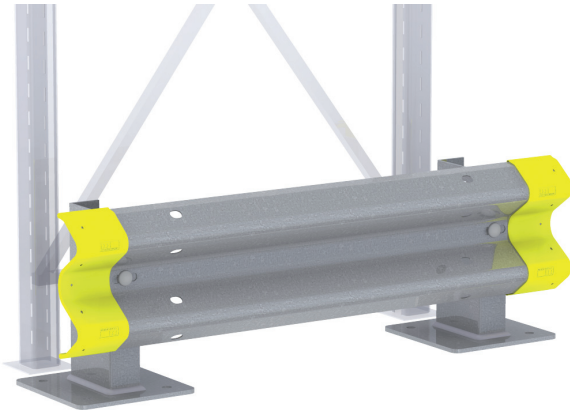


### BULL-DOG BRACKETS Corner Pallet Racking Leg Guards

#### Features:

- Designed to comply with AS 4084-2012.
- Designed for corner applications.
- 500mm high for increased protection and visibility.
- Manufactured from 6mm thick mild steel.
- Powder coated high visibility Safety Yellow.
- Mounts independently of racking with fixings supplied.

PART No.	DESCRIPTION
BDB500C	Bull-Dog bracket – 180 x 180 x 500 x 6mm



## W-BEAM RACKING END PROTECTOR

### Features:

- Fully hot dipped galvanised finish.
- Extremely strong steel construction.
- Available in three standard lengths.
- Supplied in kit form.
- Comes complete with high visibility end boots.
- Full range of spare parts available.
- Mounts independently of racking.

**Material:** Posts – Mild steel 178 x 76 x 6mm.  
Rails – Mild steel 2.75mm thick.

**Finish:** Hot dipped galvanised.

**Height:** 400mm.

**Length:** 1320, 1820 or 2320mm.

**Installation:** Surface mounted with fixings supplied.



High visibility end boot (included) fits easily onto the W-Beam rail ends.

PART No.	DESCRIPTION
WRP1320	W-Beam racking protector – 1320mm long
WRP1820	W-Beam racking protector – 1820mm long
WRP2320	W-Beam racking protector – 2320mm long



## MENNI RACKING END GUARDS

### Features:

- Comes complete with fixings.
- Mounted independently of racking.
- Super tough polyethylene construction.
- Accepts standard 50mm diameter FRP sign post.
- Low cost at a fraction of the cost of fabricated steel units.
- Impact absorbing qualities.
- U.V. stabilised – can be used outdoors.

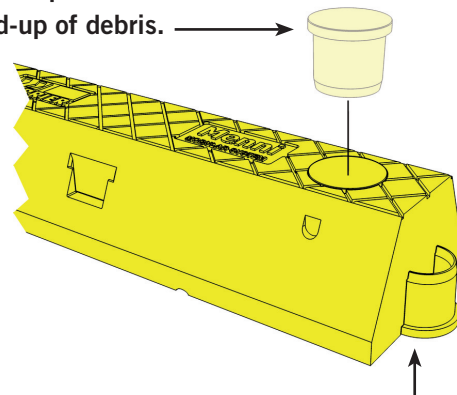
**Material:** Injection moulded Linear Low Density Polyethylene (LLDPE).

**Finish:** Solid colour (Yellow standard).

**Dimensions:** Single – L1100 x W150 x H100mm.  
Double – L2200 x W150 x H100mm.

**Fixings:** 4 off 8 x 12mm masonry anchors (supplied).

Capped mounting holes prevent build-up of debris.



Module connectors provide solid connection between sections.

PART No.	DESCRIPTION
MRP1100	Menni single racking end guard – 1100mm long
MRP2200	Menni double racking end guard – 2200mm long



## MENNI Asset Protection

Menni is a set of four modular components that can be plugged together in any combination to satisfy a wide range of end user applications. These applications may include protecting physical assets by preventing vehicles from coming into contact with them. Alternatively, Menni can be used where goods are stored near pedestrian zones to prevent encroachment by forklifts and other vehicles. There are four modules in the Menni system. The end module, the body module, the 'T' or intersection module and the 90 degree corner module.

### Features:

- Designed to comply with AS/NZS 2890.1:2004 for wheel stops and AS 1657:1992 for walkways.
- Solid colour, U.V. stabilised, high tech composite plastic construction.
- Supplied with fixings, blanking plugs and connectors ready for installation.
- Built-in edge reflectors for improved visibility for approaching vehicles.
- Optional top reflector plugs for improved pedestrian safety.
- Slip resistant texture moulded into surface.
- Excellent outdoor weathering characteristics.
- Lightweight with incredible strength.
- Modular design for ease of use and handling.

PART No.	DESCRIPTION
BME-Y	Menni end module – Yellow
BMB-Y	Menni body module – Yellow
BMT-Y	Menni T-intersection module – Yellow
BMC-Y	Menni 90 degree corner module – Yellow
BMR	Optional top reflector plugs



**MENNI BMB-Y**  
Body module

Body modules are used to provide length. They can be used in any quantity and they may be combined with end, corner & 'T' modules.

L550 x W150 x H100mm.



**MENNI BME-Y**  
End module

End modules provide a start and end point for any installation. The rounded and sloping end reduces tripping hazards or the risk of tyre damage to vehicles.

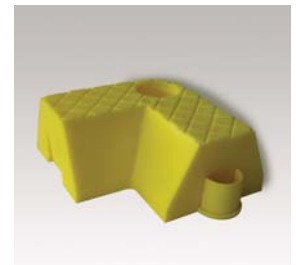
L550 x W150 x H100mm.



**MENNI BMT-Y**  
T-Intersection Module

T-intersection modules allow intersecting lines of modules to connect to each other. Particularly useful in pedestrian fencing or trolley bay applications.

L(a)300 x L(b)225  
x W150 x H100mm.



**MENNI BMC-Y**  
90° corner module

Corner modules allow for left or right changes in direction of 90 degrees. Can be used with all other modules.

L(a)225 x L(b)225  
x W150 x H100mm.





## PARK SENTRY®

Bump-N-Go protection for Square & Round car park columns

### Features:

- Superior material protects vehicles and columns!
- Made of ARPRO®, a high tech material specifically engineered to absorb impact.
- Oil, chemical, water and flame resistant and 100% recyclable.
- Thin design virtually adds space to parking structures – vehicles can now park closer to columns.
- Designs available to suit square or round columns.
- Specially designed flat panels give progressive resistance, offering soft protection for slight bumps, and more resistance when needed to absorb harder collisions.
- Extra thickness at corners to resist damage at the most vulnerable spots (square models).
- Hides and protects damaged columns and walls without an expensive paint job.
- Seamless design modernizes the look of any garage.
- Can be customized to fit around any column, pole, pipe or curb.
- Extensions available for larger walls and columns.

**Material:** Specifically engineered ARPRO® material.

**Finish:** Hi-Vis Safety Yellow.

**Column size:** Square kit – Perfectly fits 610 x 610mm column (can be cut to fit custom size).  
Round kit – Wrap exactly around 610mm diameter column.

**Height:** 1 metre.

**Weight:** 5kgs (approx.)

**Installation:** One person installation (straps included).

PART No.	DESCRIPTION
PSSQ-Y-KIT	Park Sentry – Square kit (4 panels & 2 straps)
PSSQ-Y-COR	Park Sentry – Additional Square corner (1 unit)
PSSQ-Y-PAN	Park Sentry – Additional Square panel (1 panel)
PSRD-Y-KIT	Park Sentry – Round kit (3 panels & 2 straps)
PSRD-Y-PAN	Park Sentry – Additional Round panel (1 panel)
PSS-4000-BR	Park Sentry – Additional straps

## COLUMN SENTRY®

Column Sentry® absorbs impacts by surrounding your columns with a unique cushion of air. One person can install and remove for maintenance in seconds. They are available in a range of standard sizes that fit common column sizes.



Moulded from high impact

polyethylene in bright Safety Yellow

with contrasting Black straps and U.V. stabilised for indoor or outdoor use.

Column Sentry's unique design can be used on square, round or 'H' pattern columns offering both versatility and durability. The air vent system allows air to escape during impact, allowing the column protector to absorb impact and then return to its original form.

### Features:

- Protects square, round or 'H' columns.
- Highly visible U.V. stabilised. Safety Yellow colour.
- Surprisingly cost-effective and maintenance free.
- Extremely versatile and durable.
- Chemical resistant, non-conductive and waterproof.

**Material:** Low-density polyethylene.

**Finish:** Safety Yellow (solid colour).

**Weight:** 10kgs up to 41kgs.

**Installation:** Simple one person installation, no tools.

**Fits square or round columns**

PART No.	DESCRIPTION
CS60107-20S	To suit columns up to 200mm x 200mm or 200mm dia. Overall size 600mm dia. x 1070mm high
CS60107-25S	To suit columns up to 250mm x 250mm or 250mm dia. Overall size 600mm dia. x 1070mm high
CS60107-30S	To suit columns up to 300mm x 300mm or 300mm dia. Overall size 600mm dia. x 1070mm high
CS84107-35S	To suit columns up to 350mm x 350mm or 350mm dia. Overall size 840mm dia. x 1070mm high
CS84107-41S	To suit columns up to 410mm x 410mm or 410mm dia. Overall size 840mm dia. x 1070mm high