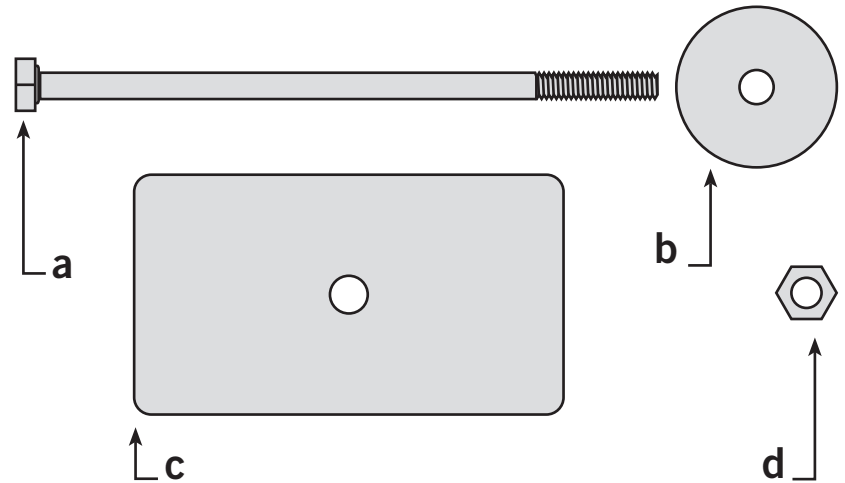


INFO-BOARD

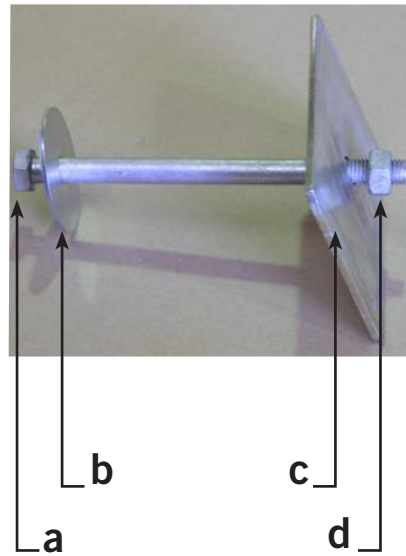
Fitting instructions:

1. Fixings shown in order of Assembly. (PHOTO 1).
2. Insert bolt (a) with 50mm washer (b) though base from the bottom. (PHOTO 2).
3. Position Info-board panel over bolt (a). (PHOTO 3).
4. Place retainer plate (c) over bolt (a) inside Info-board. (PHOTO 3).
5. Place retainer plate (c) over bolt (a) inside Info-board. (PHOTO 3).

Note: It is not necessary to over tighten nut (d).



a. bolt. b. 50mm washer. c. retainer plate. d. 10mm hex nut.



1.



2.



3.



IB7 – 7kg base kit & sign.